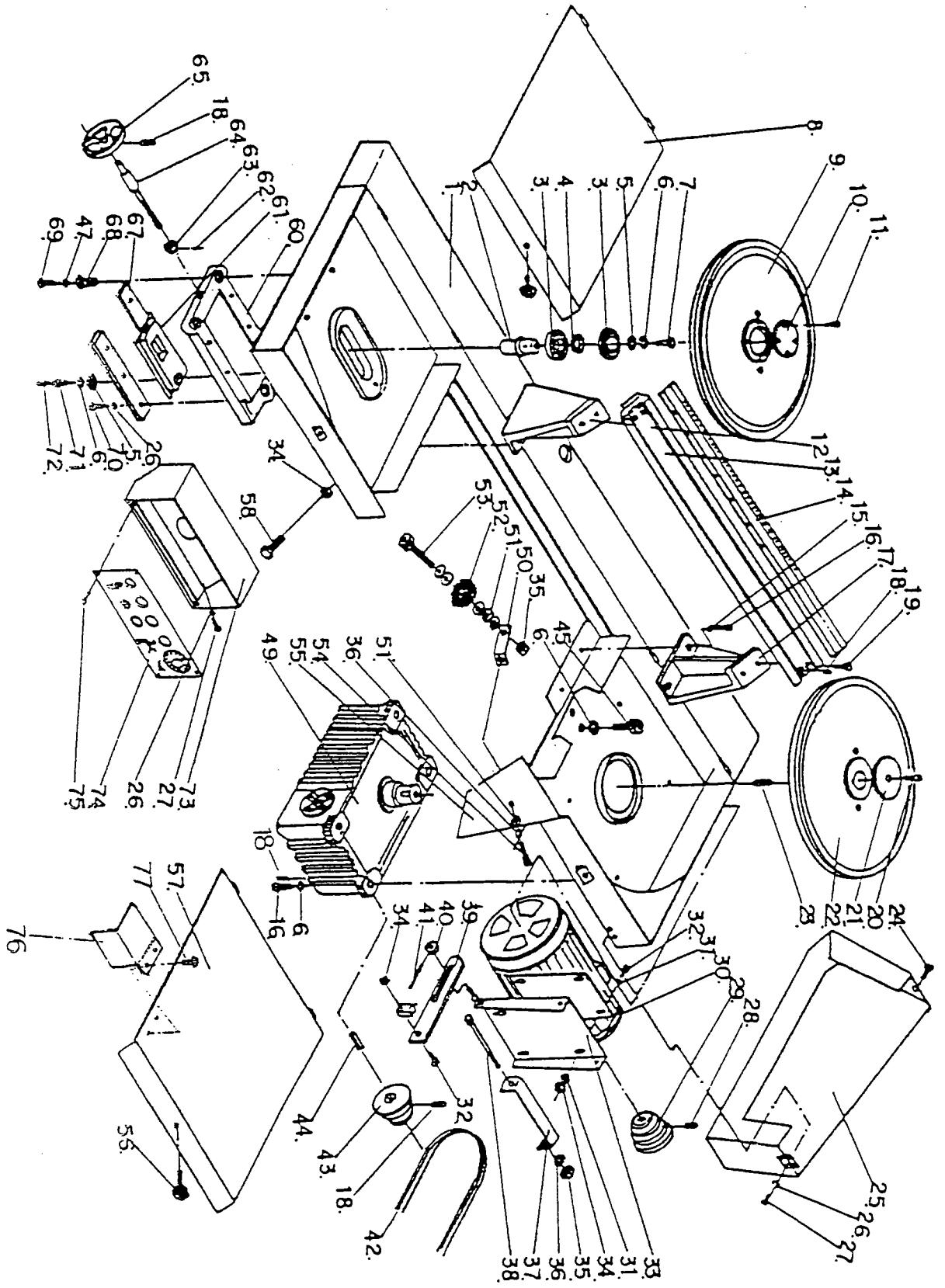


SAW ARM

MBS-10M



MBS - 10M

PARTS LIST FOR THE MBS-10M BAND SAW

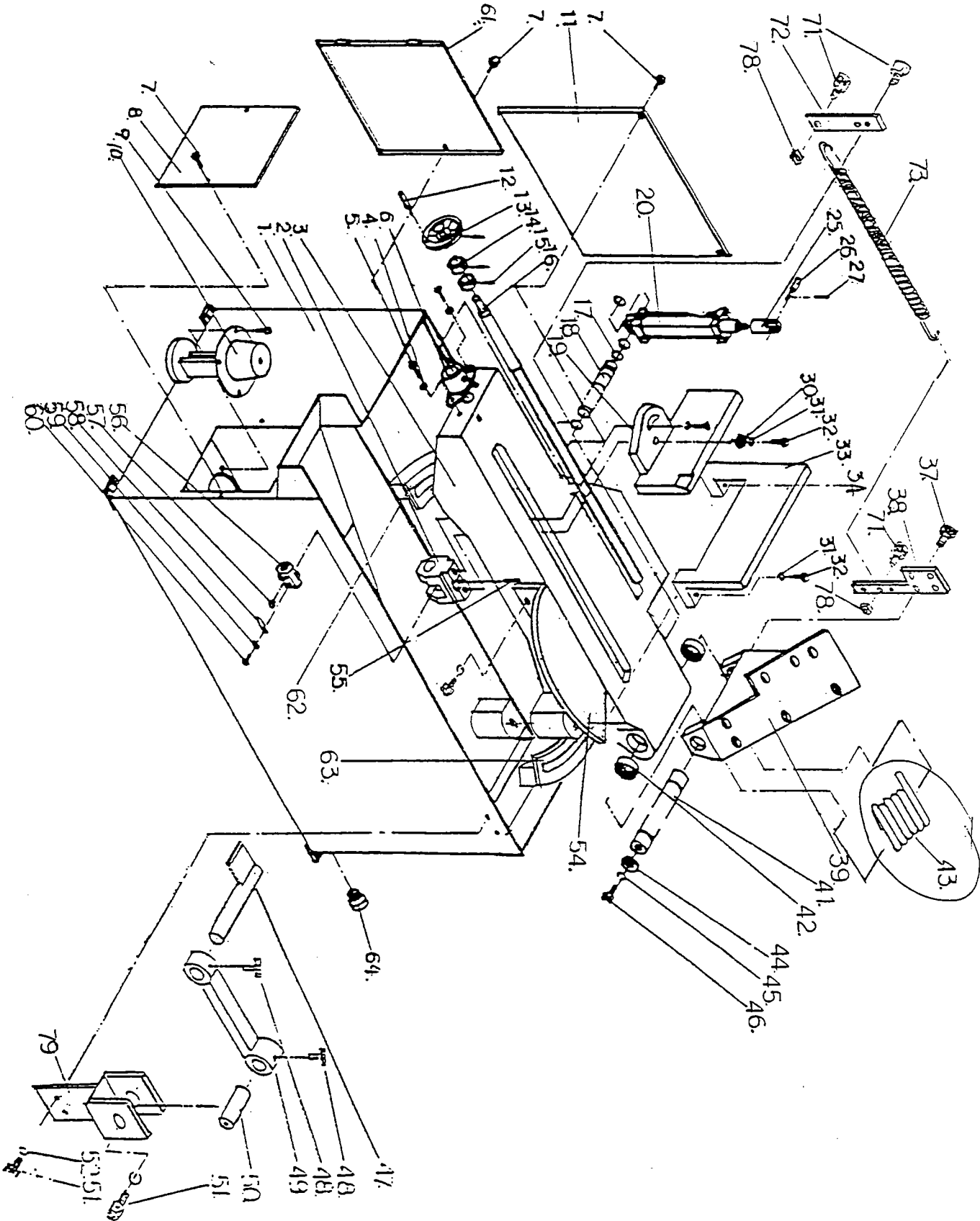
PLEASE ORDER BY PART NUMBER ONLY

SAW ARM

INDEX NO.	PART NO.	DESCRIPTION	SIZE	QTY.
1	MBS10M-101	SAW ARM		1
2	MBS10M-102	IDLER WHEEL SHAFT		1
3	BB-6025Z	BALL BEARING		2
4	MBS10M-104	BEARING WASHER		1
5	TS-1550081	WASHER	M12	2
6	TS-1551081	LOCK WASHER	M12	12
7	MBS10M-107	BOLT	M12xP1.75	1
8	MBS10M-108	LEFT WHEEL COVER		1
9	MBS10M-109	IDLER WHEEL		1
10	MBS10M-110	WASHER (A)		1
11	MBS10M-111	SCREW	M6x1.0x6	4
12	MBS10M-112	LEFT BRACKET		1
13	MBS10M-113	DOVETAIL GUIDE		1
14	MBS10M-114	GAUGE PLATE (RULER)		1
15	TS-1551081	LOCK WASHER	M12	4
16	TS-1506031	HEX SOCKET CAP SCREW	M12x1.75x30	8
17	MBS10M-117	RIGHT BRACKET		1
18	TS-1524051	SET SCREW	M8x1.25x20	10
19	TS-1505011	HEX SOCKET CAP SCREW	M10x1.5x16	4
20	TS-1504041	HEX SOCKET CAP SCREW	M8x1.25x20	1
21	HBS9M-121	WASHER (B)		1
22	MBS10M-122	DRIVE WHEEL		1
23	MBS10M-123	KEY	10x8x20L	1
24	TS-1534061	PAN HEAD SCREW	M6x10x20	1
25	HBS9M-125	PULLEY COVER		1
26	TS-1550041	LOCK WASHER	M6	14
27	TS-1534041	PAN HEAD SCREW	M6x1.0x20	8
28	TS-1524021	SET SCREW	M8x1.25x10	1
29	MBS10M-129	MOTOR PULLEY		1
30	MBS10M-130	MOTOR	1-1/2 HP	1
31	TS-1550071	WASHER	M10	8
32	TS-1491021	HEX CAP BOLT	M10x1.5x20	5
33	HBS9M-133	MOTOR MOUNTING PLATE		1
34	TS-1540071	NUT	M10x1.5	6
35	TS-1540061	NUT	M8x1.25	2
36	TS-1551061	LOCK WASHER	M8	2
37	HBS9M-137	BRACKET		1
38	MBS10M-138	LOCK SCREW		1
39	HBS9M-139	ADJUSTING PLATE		1
40	TS-1540101	LOCK NUT	M16x2.0	1
41	MBS10M-141	LEVER		1
42	VB-A37	V-BELT		1

43	MBS10M-143	TRANSMISSION PULLEY		1
44	MBS10M-144	KEY	7x7x25	1
45	TS-1492041	HEX CAP BOLT	M12x1.75x40	6
47	TS-1551071	LOCK WASHER	M10	7
49	MBS10M-149	GEAR BOX	ex. 149 HBS9M-149	1
50	MBS10M-150	BRACKET		1
51	TS-1550061	WASHER	M8	6
52	MBS10M-152	WIRE BRUSH		1
53	MBS10M-153	SCREW		1
54	TS-1504051	HEX SOCKET CAP SCREW	M8x1.25x25	1
55	MBS10M-155	WIRE BRUSH COVER		1
56	MBS10M-156	KNOB		1
57	MBS10M-157	RIGHT WHEEL COVER		1
58	TS-1491031	HEX CAP BOLT	M10x1.5x25	1
60	MBS10M-160	TENSION PLATE		1
61	MBS10M-161	ADJUSTING SLIDE		1
62	MNS10M-162	SPRING PIN	3x25	1
63	HBS9M-163	COLLAR		1
64	MBS10M-164	BLADE TENSIONING SCREW		1
65	MBS10M-165	HANDWHEEL		1
67	MBS10M-167	GUIDE PLATE		2
68	TS-1494031	HEX CAP ADJUSTING BOLT	M16x2.0x40	3
69	TS-1491081	HEX CAP BOLT	M10x1.5x50	3
70	TS-1482041	HEX CAP BOLT	M6x1.0x20	6
71	MBS10M-171	BOLT	M12x1.75x25	1
72	MBS10M-172	GREASE NIPPLE	1/4"	1
73	MBS10M-173	CONTROL BOX		1
74	MBS10M-174	CONTROL PANEL		1
75	MBS10M-175	PAN HEAD SCREW	M4x0.7x5	4
76	MBS10M-176	BLADE COVER		1
77	MBS10M-177	PAN HEAD SCREW	M5x0.8x6	2

BASE AND BED ASSEMBLY



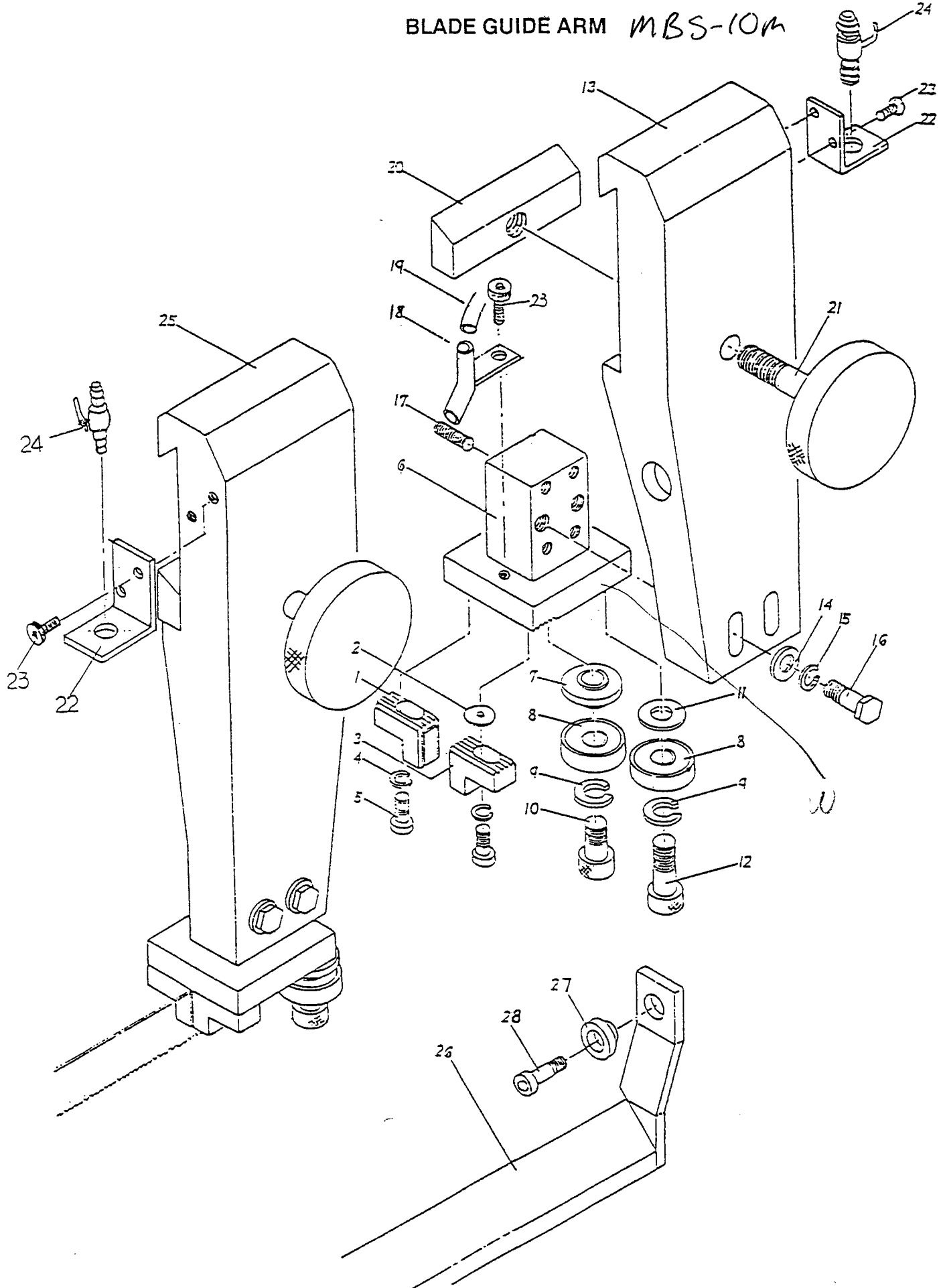
BASE AND BED ASSEMBLY

1	MBS10M-301	BASE	1
2	MBS10M-302	WISE BRACKET	1
3	MBS10M-303	BED	1
4	TS-1551071	LOCK WASHER M10	2
5	TS-1491061	HEX CAP BOLT M10x1.5x40	2
6	MBS10M-306	SCREW SLEEVE	1
7	TS-1503061	HEX SOCKET CAP SCREW M6x1.0x25	9
8	MBS10M-308	PUMP COVER	1
9	TS-1503051	HEX SOCKET CAP SCREW M6x1.0x20	4
10	MBS10M-310	COOLANT PUMP 1/8 HP	1
11	MBS10M-311	COVER	1
12	MBS10M-312	HANDLE	1
13	MBS10M-313	HAND WHEEL	1
14	HBS9M-314	COLLAR	2
15	MBS10M-315	SPRING PIN 6x30	2
16	HBS9M-316	WISE LEAD SCREW	1
17	MBS10M-317	RETAINER	4
18	MBS10M-318	CYLINDER PIVOT	1
19	MBS10M-319	MOVABLE VISE JAW	1
20	MBS10M-320	HYDRAULIC CYLINDER	1
25	MBS10M-325	PISTON HEAD	1
26	MBS10M-326	COTTER PIN 3x30	1
27	MBS10M-327	UPPER PIVOT	1
30	TS-1550081	WASHER M12	3
31	TS-1551081	LOCK WASHER M12	5
32	TS-1492041	HEX CAP BOLT M12x1.75x40	5
33	MBS10M-333	FIXED VISE JAW	1
37	MBS10M-337	SCREW	4
38	MBS10M-338	STOP PLATE	1
39	MBS10M-339	SAW ARM BRACKET	1
41	MBS10M-341	PIVOT	1
42	MBS10M-342	SLEEVE	1
43	MBS10M-343	SPRING	1
44	MBS10M-344	WASHER	1
45	TS-1551081	LOCK WASHER M12	1
46	TS-1492041	HEX CAP BOLT M12x1.75x40	1
47	MBS10M-347	MATERIAL STOP	1
48	MBS10M-348	LOCK BOLT	2
49	MBS10M-349	STOP BRACKET	1
50	MBS10M-350	PIVOT	1
51	TS-1490031	HEX SOCKET CAP SCREW M8x1.25x20	1
52	TS-1551061	SPRING WASHER M8	1
54	MBS10M-354	BED FILLER PLATE	1
55	MBS10M-355	SPRING PIN 3x30	1
56	MBS10M-356	LEAD SCREW NUT	1
57	MBS10M-357	ROTATING PIN	1
58	MBS10M-358	SPRING PIECE	1
59	TS-1550031	WASHER M5	1
60	TS-1481011	HEX SOCKET CAP SCREW M5x0.8x8	1
61	MBS10M-361	ELECTRICAL BOX DOOR	1
62	MBS10M-362	TURNING SLIDE	1

MBS 10M - HCRK KIT FOR HYDRAULIC CYLINDER

63	MBS10M-363	TURNING SLIDE	1
64	MBS10M-364	PLUG	1/2"PT 1
71	TS-1504041	HEX SOCKET CAP SCREW	M8x1.25x20 2
72	MBS10M-372	BRACKET	1
73	MBS10M-373	SPRING	1
78	TS-1540061	NUT	M8 2
79	MBS10M-379	SUPPORT	1

BLADE GUIDE ARM MBS-10M



MBS-10M

BLADE GUIDE ARM

1	MBS10M-201	CARBIDE BLADE GUIDE	2	
2	MBS10M-202	WASHER	1	
3	MBS10M-203	CARBIDE BLADE GUIDE	3	
4	TS-1551041	LOCK WASHER	M6	4
5	TS-1503061	HEX SOCKET CAP SCREW	M6x1.0x25	4
6	MBS10M-206	GUIDE SEAT	1	
7	MBS10M-207	WASHER	2	
8	BB-620ZZ	BALL BEARING	4	
9	TS-1551071	LOCK WASHER	M10	4
10	TS-1505061	HEX SOCKET CAP SCREW	M10x1.5x40	2
11	TS-1550071	WASHER	M10	2
12	TS-1505031	HEX SOCKET CAP SCREW	M10x1.54x25	2
13	MBS10M-213	GUIDE ARM	1	
14	MBS10M-214	WASHER	M8	4
15	TS-1551061	LOCK WASHER	M8	4
16	TS-1490061	HEX CAP BOLT	M8x1.25x35	4
17	TS-1523041	SET SCREW	M6x1.0x12	8
18	MBS10M-218	HOSE	2	
19	MBS10M-219	COOLANT NOZZLE	2	
20	MBS10M-220	CLAMPING BLOCK	2	
21	MBS10M-221	KNOB	2	
22	MBS10M-222	BRACKET	2	
23	TS-1533031	PAN HEAD SCREW	M5x0.8x10	4
24	MBS10M-224	FITTING	2	
25	MBS10M-225	GUIDE ARM	1	
26	MBS10M-226	BLADE GUARD	1	
27	TS-1503021	HEX SOCKET CAP SCREW	M6x1.0x10	1
28	MBS10M-228	WASHER	1	

Item #	Description
M-414465	MANUAL MBS-10M BANDSAW
414465	MBS-10M MITRE BANDSAW 10"
MBSM-153	SCREW
MBS10-313	HAND WHEEL
MBS10M-HFCV	HYD.FLOW CONTROL VALVE ASSY
MBS10M-LS	LIMIT SWITCH D4MC-5000
MBS10M-MS	MAG.CONT. C11L W/THERMO RELAY
MBS10M-PB1	"ON" PUSHBUTTON (GREEN)
MBS10M-PB2	EMERGENCY STOP BUTTON VS-L1
MBS10M-PL	PILOT LIGHT SP-251
MBS10M-PT	TRANSFORMER P40VA
MBS10M-PS	COLOR KEY SWITCH

ELECTRICAL SCHEMATIC

FILE
MBS-10M

